

OUR VISION

“Technology
is how we add
things to the
world”

— ANNE CHAPMAN

STRUCTURE

The new self-adhesive wall decoration revolution.

The ultimate mineral fibers self-adhesive wall covering, with patented system which allows an easy installation. It is water resistant and has an optimal fire behavior which allows the installation in commercial spaces as well in kitchens and bathrooms.

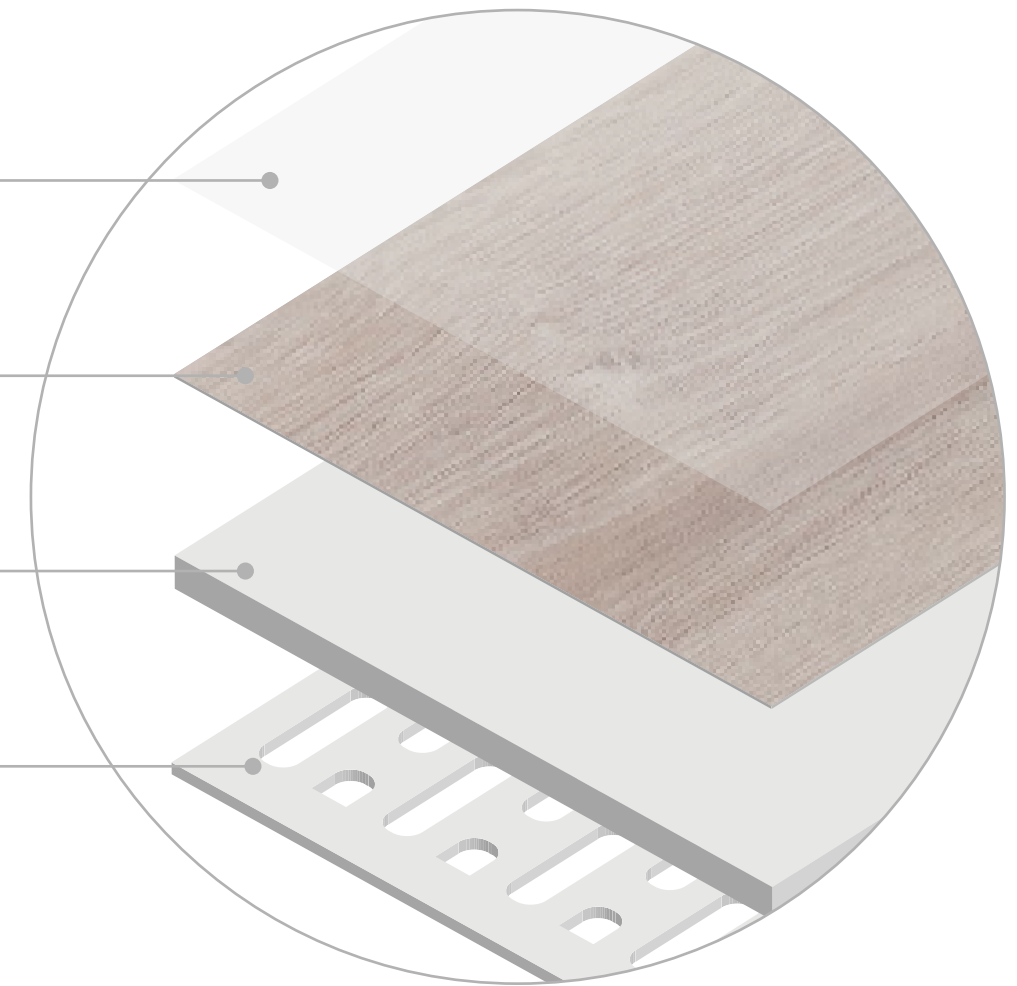


1 High resistance PU protective layer

2 PVC decorative layer

3 Mineral fiber board

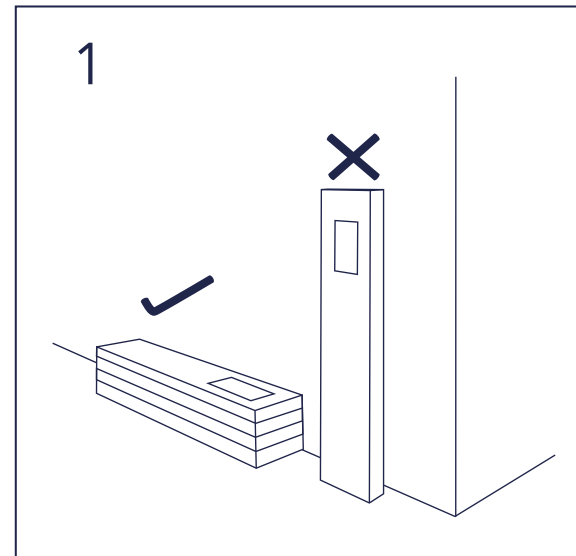
4 Self-adhesive Foamed Backing with holes for PU glue



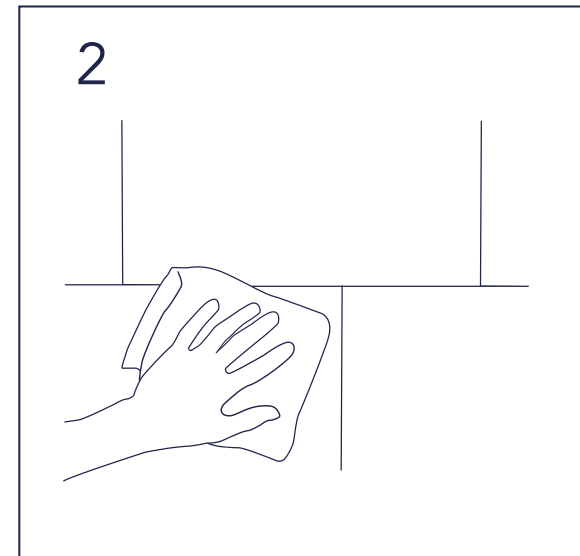


INSTALLATION GUIDE

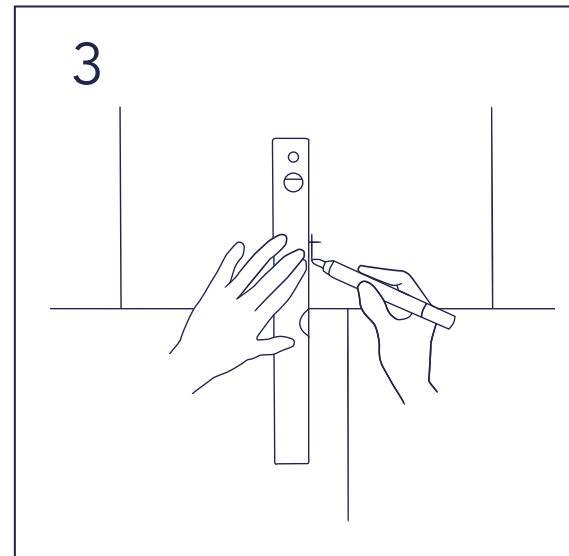
HOW TO INSTALL



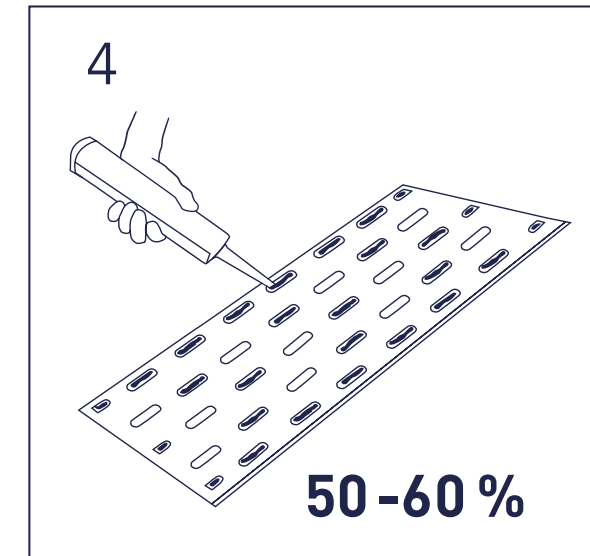
Storage the boxes horizontally



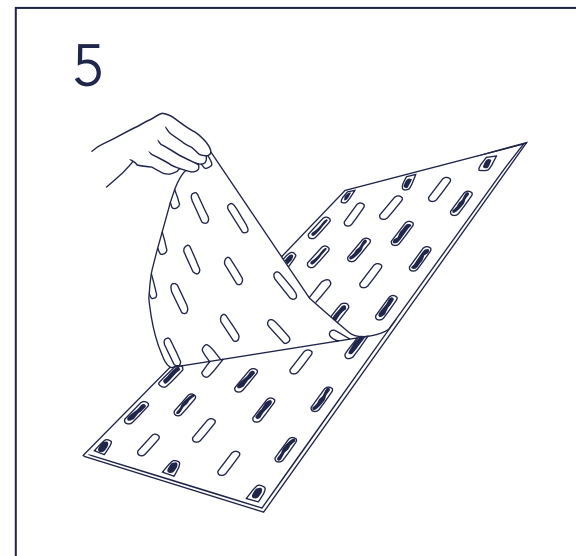
Clean the surface



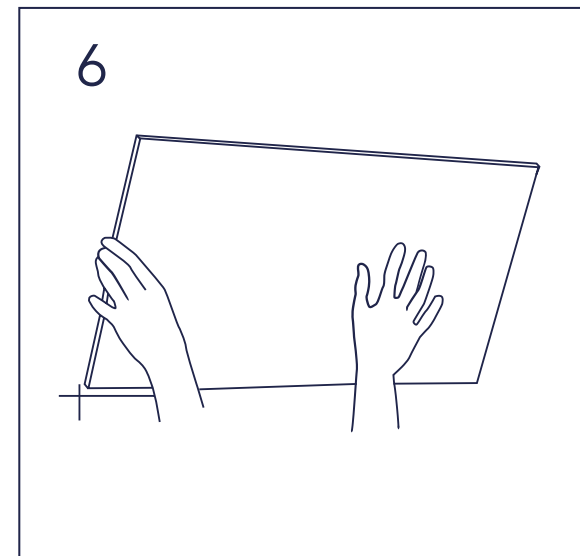
Mark the center of the wall



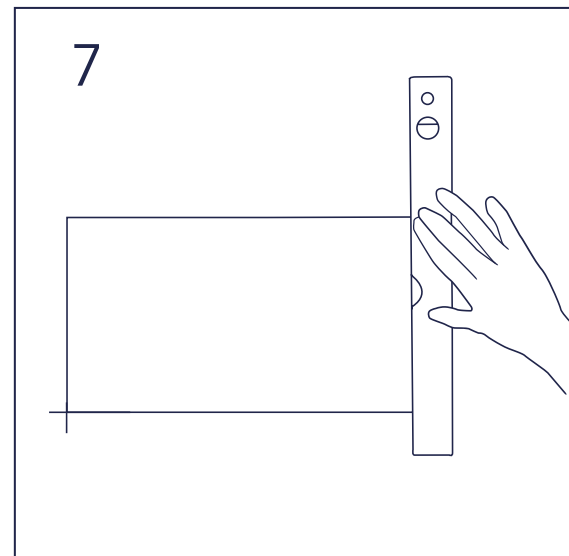
Apply the silicone in the holes



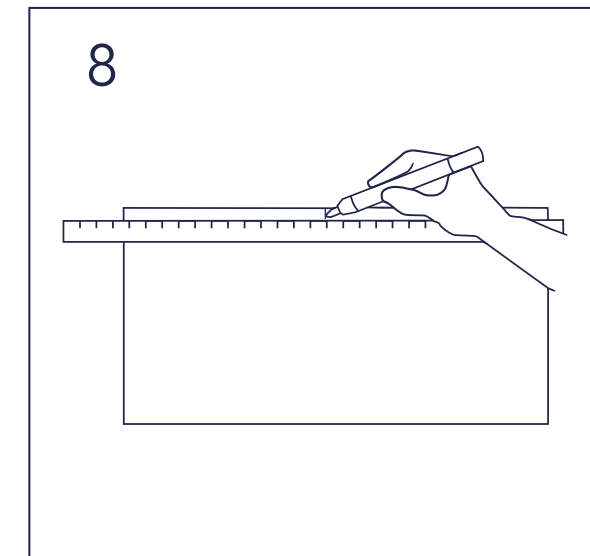
Remove the protector film



Stick the tile

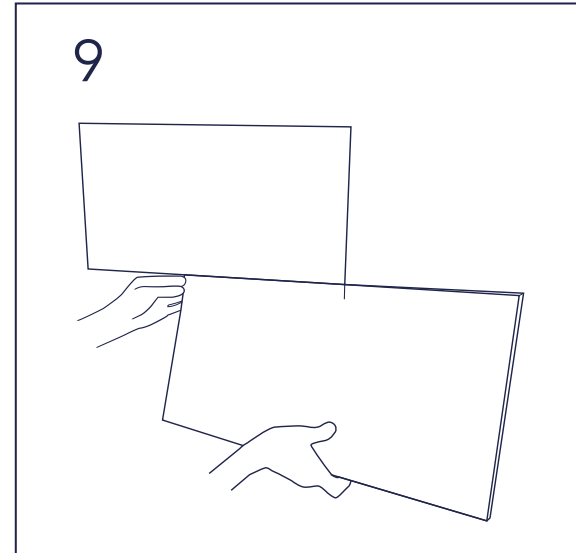


Verify that the tile is alienated

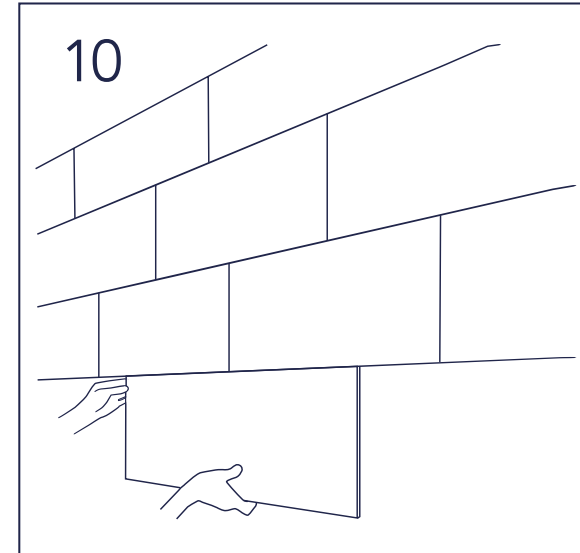


Mark the center of the following tile

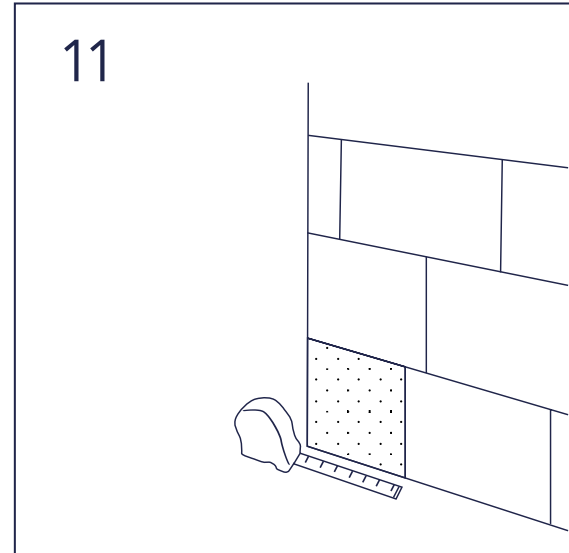
HOW TO INSTALL



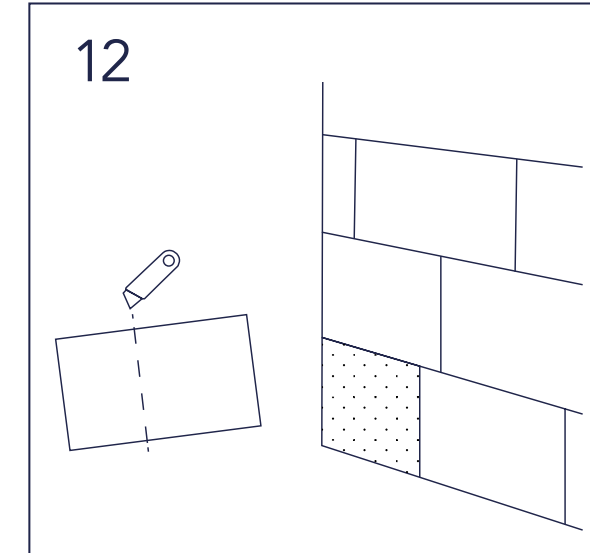
Align the following tile with the center of the wall



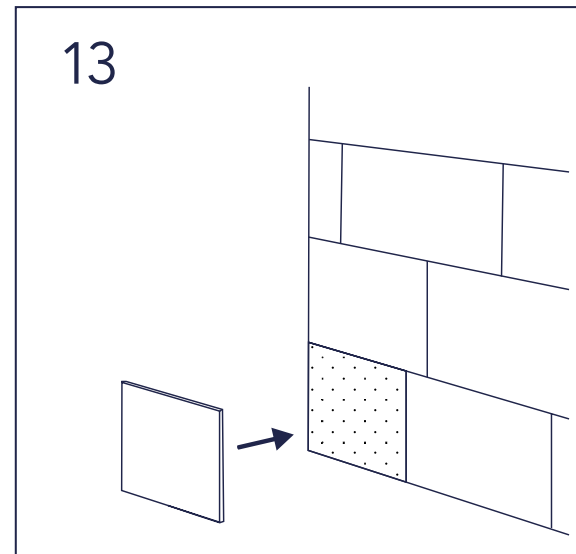
Repeat with the following tiles



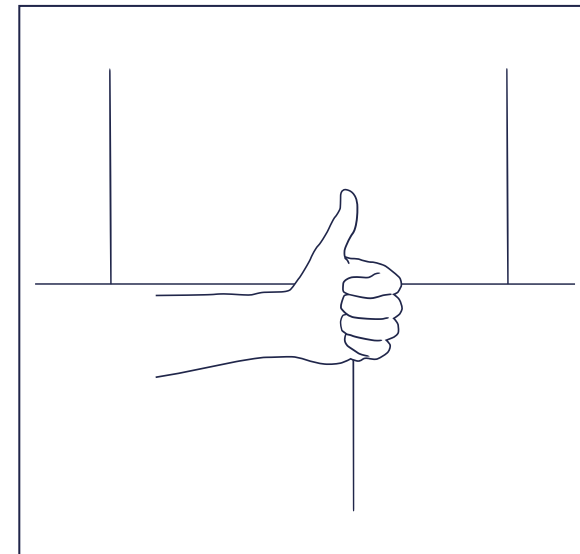
Measure the cut on the corner



Cut the excess with a cutter



Collocate the cut tile



Ready!

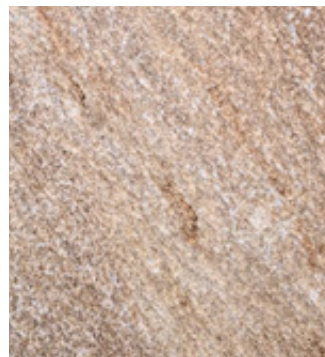
INSTALLATION

Can be directly installed on: ceramic, stoneware, porcelain.

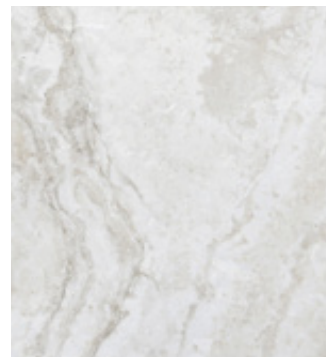
Installation after applying a primer: wood, plaster-board, metallic surfaces, plaster, bases of cement or derivatives.



Ceramic
DIRECTLY



Stoneware
DIRECTLY



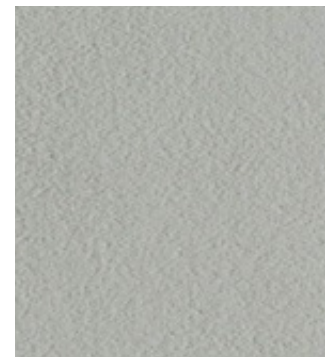
Porcelain
DIRECTLY



Wood
AFTER A PRIMER



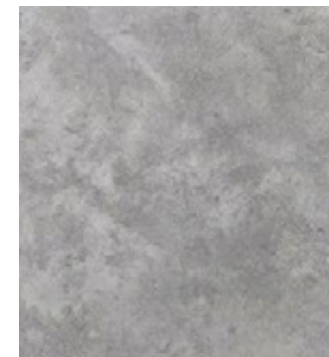
Plaster
AFTER A PRIMER



Plasterboard
AFTER A PRIMER



Metal
AFTER A PRIMER

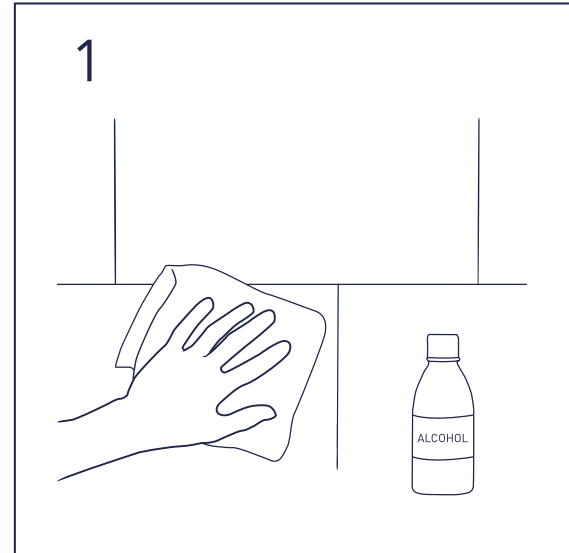


Cement
AFTER A PRIMER

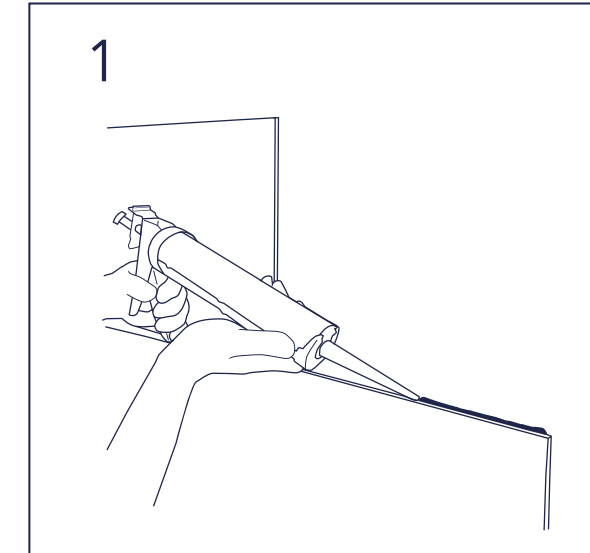
INSTALLATION IN SHOWER

Is 100% Water resistant, made with special compound of mineral fibers which allows to be installed in damp areas like bathrooms and kitchens.

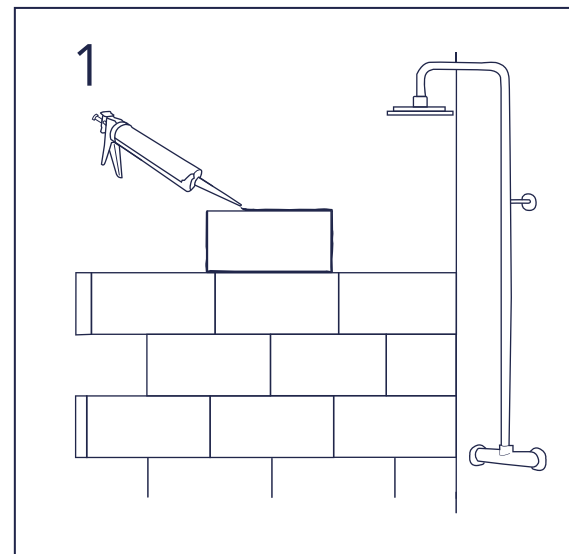
When installing inside the shower, just apply a transparent anti-mold silicone in line around the perimeter of the tile.



Clean the surface



Apply sealant silicone



Apply around the perimeter and remove excess



BENEFITS & ADVANTAGES

BENEFITS & ADVANTAGES

	 <div>Thermal insulation. A warm feeling, from 3 % - 4 % warmer than a ceramic tile.</div>	 <div>B-s1, d0</div>		 <div>No construction work. The installation won't cause dust, noise or any type of mess at all.</div>	 <div>Real Touch and feeling. Due a great variety of embossed, the plank looks more real.</div>
		<div>Great fire behavior. Suitable for commercial premises thanks to complying with standard B-s1, d0.</div>			
<div>100% Water resistant. Special compound of mineral fibers. Can be installed in damp areas like bathrooms and kitchens.</div>	 <div>Easy Installation. Light and easy to manage. Available to install on almost any type of surface.</div>	 <div>Easy to cut. Can be cut into any shape using just a cutter.</div>		 <div>Great dimensional stability. Will not be deformed or altered with temperature changes.</div>	
		 <div>Sound insulation. Absorb environmental sounds over 10 dB.</div>			
	 <div>Professional finish. The 4 sides natural painted bevel gives a real tile finish.</div>	<div>A+</div>		<div>VOC emissions. A+ class</div> <div></div>	



FORMATS

FORMATS

Can be made in the following sizes:



Plank 185 x 915 mm



Tile XL 400 x 800 mm



Tile 305 x 610 mm

NEW SIZE

New bigger size > Tile XL collection

400 x 800 mm





TILE

305 x 610 mm

TILE XL

400 x 800 mm



COLOR COLLECTION

COLOR COLLECTIONS

"Color is the place
where our brain and
the universe meet."

— PAUL KLEE



Our full range has been
divided in four collections
according to its texture to
help to find the perfect colors
to create unique sensations in
a owned and styled collection.

COLOR COLLECTIONS



HARMONY

FIND THE PERFECT BALANCE

Light-colored woods, smooth textures, treated avoiding knots, to create continuity.



TRADITION

SOLID CHARACTER IN THE PATTERNS

Woods with strong textures; knots, imperfections and gradients that give a lot of personality.



VISION

FEEL THE EMOTION IN EVERY COLOR

Mix of woods and stones with other materials to achieve unique elements that stand out for their intensity.



NATURE

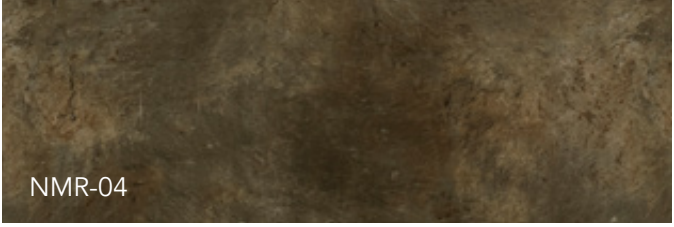
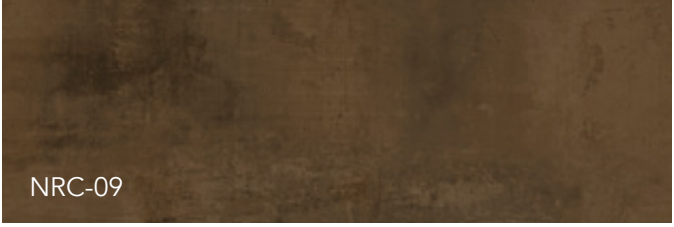
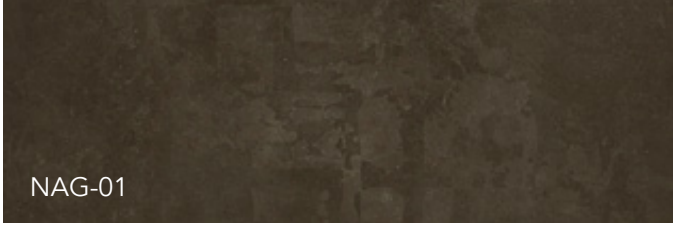
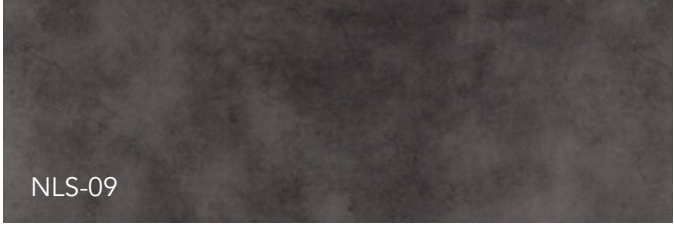
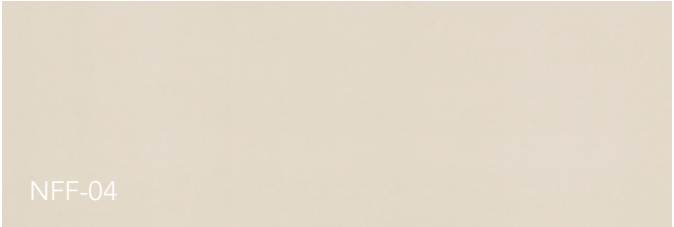
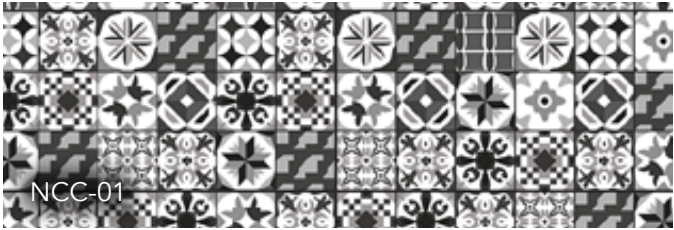
LEARNING FROM THE EARTH

Natural stones, marbles and concrete, selected looking for the purest beauty of nature.

COLORS OVERVIEW

	 <p>TAO-01</p>	 <p>VAO-01</p>	 <p>TWS-01</p>
 <p>TLI-01-W</p>	 <p>TLI-01</p>	 <p>TLI-03</p>	 <p>TPO-04</p>
 <p>TPO-01</p>	 <p>TTO-01</p>	 <p>TPO-02</p>	 <p>TAO-04</p>
 <p>VAO-03</p>	 <p>TNO-02</p>	 <p>TLI-04</p>	 <p>TLI-02</p>
 <p>VOR-10</p>	 <p>TPO-07</p>	 <p>TLI-07</p>	 <p>TLI-10</p>
 <p>TNO-04</p>	 <p>TLI-09</p>	 <p>TCA-01</p>	 <p>TRW-01</p>

COLORS OVERVIEW





TAO-01 Amber Oak



TAO-01 **AMBER OAK**





TAO-04 **AMBER OAK**



TAO-04 Amber Oak



TPO-01 Paradise Oak



TPO-01 **PARADISE OAK**





TPO-02 Paradise Oak



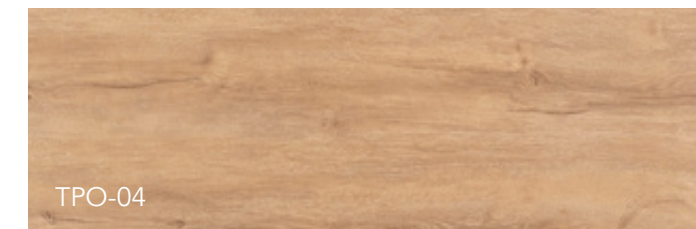
TPO-02 **PARADISE OAK**



TPO-02



TPO-04 **PARADISE OAK**



TPO-04



TPO-07 Paradise Oak



TPO-07 **PARADISE OAK**



TPO-07



TLI-01-W Liberty Oak



TLI-01-W **LIBERTY OAK**



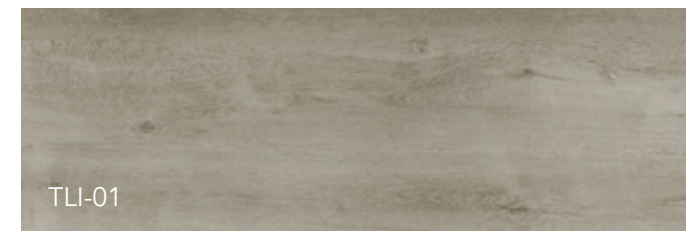
TLI-01-W



TLI-01 Liberty Oak



TLI-01 **LIBERTY OAK**



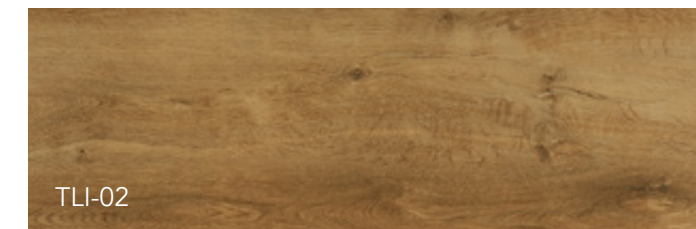
TLI-01



TLI-02 Liberty Oak



TLI-02 **LIBERTY OAK**





TLI-03 **LIBERTY OAK**



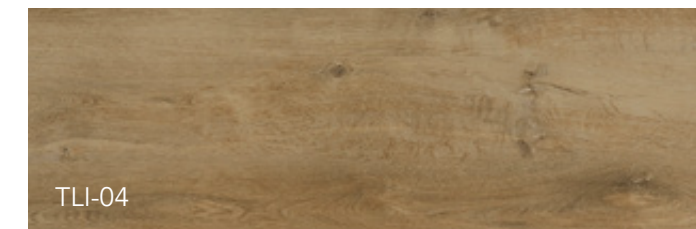
TLI-03 Liberty Oak



TLI-04 Liberty Oak



TLI-04 **LIBERTY OAK**



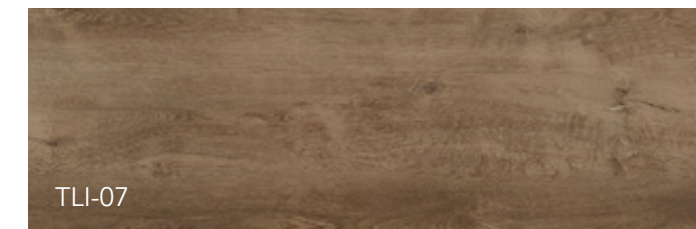
TLI-04



TLI-07 Liberty Oak



TLI-07 **LIBERTY OAK**





TLI-09 **LIBERTY OAK**



TLI-09

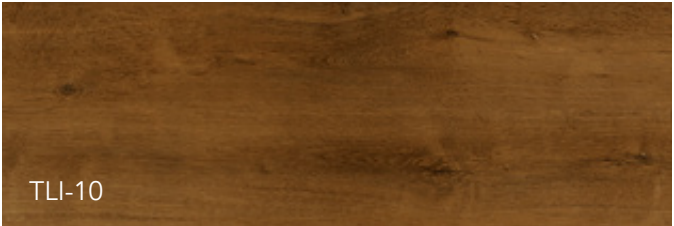
TLI-09 Liberty Oak



TLI-10 Liberty Oak



TLI-10 **LIBERTY OAK**



TLI-10



TNO-02 Nordic Oak



TNO-02 **NORDIC OAK**



TNO-02



TNO-02 Nordic Oak



TNO-02 **NORDIC OAK**



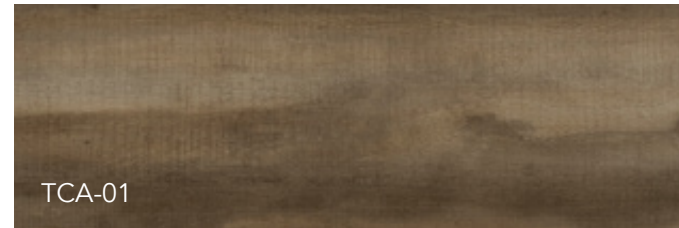
TNO-04



TCA-01 Caramel Oak



TCA-01 **CARAMEL OAK**

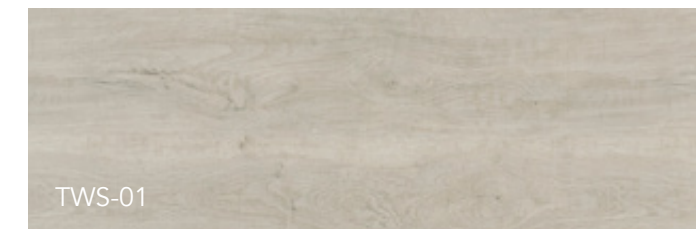




TWS-01 White Sense



TWS-01 **WHITE SENSE**





TTO-01 **TURKEY OAK**



TTO-01

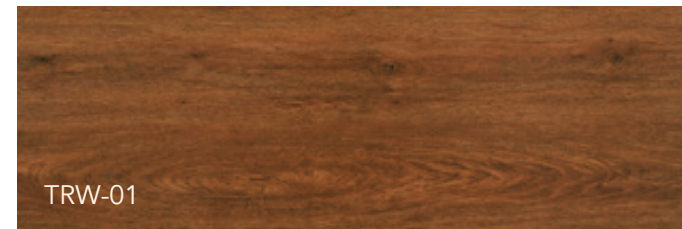
TTO-01 Turkey Oak



TRW-01 Red Walnut



TRW-01 **RED WALNUT**



TRW-01



VOR-10 Old Racine



VOR-10 **OLD RACINE**





VAO-01 **ANTIQUE OAK**



VAO-01 Antique Oak



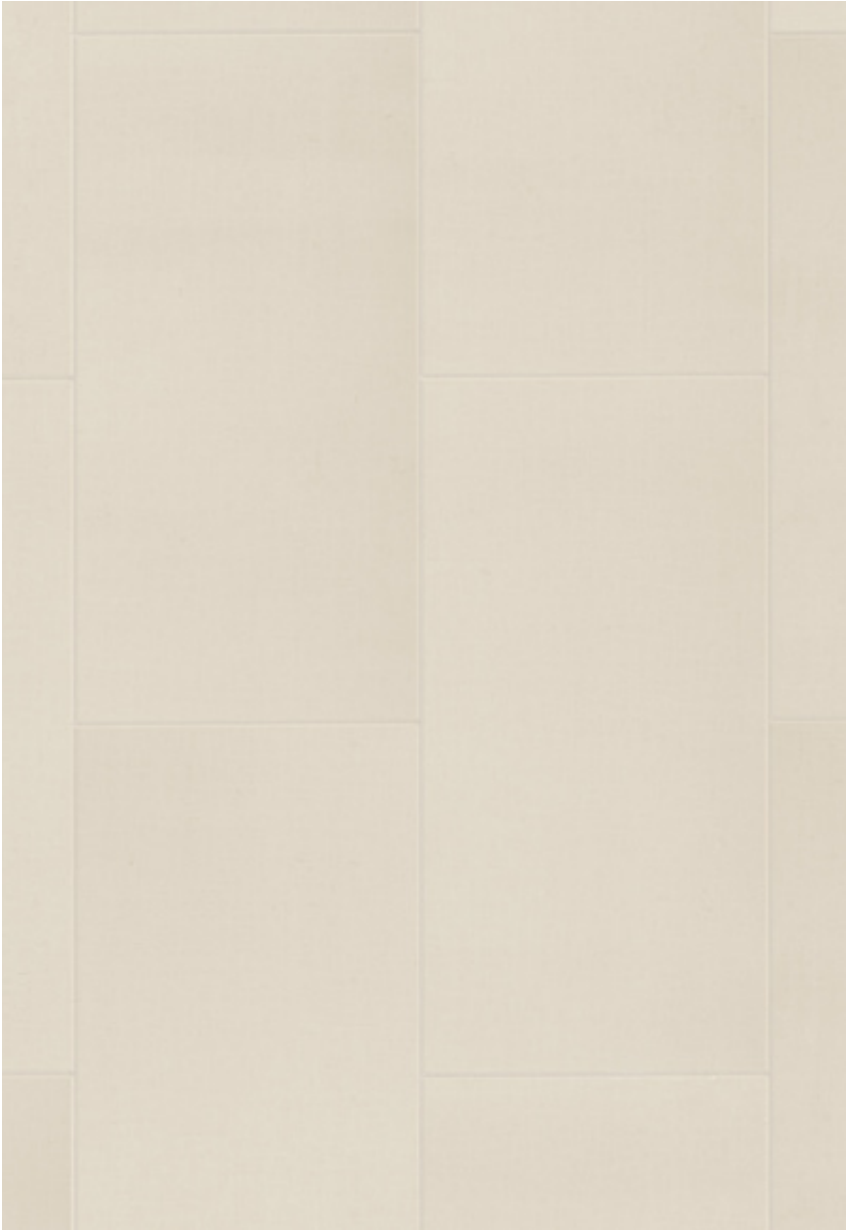
VAO-03 Antique Oak



VAO-03 **ANTIQUE OAK**



VAO-03



NFF-04 **FINE FIBER**



NFF-04 Fine Fiber



NTR-01 Travertine



NTR-01 **TRAVERTINE**





NCS-01 Classic Stone



NCS-01 **CLASSIC STONE**



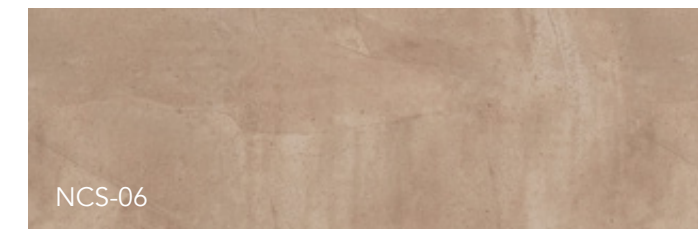
NCS-01



NCS-06 Classic Stone

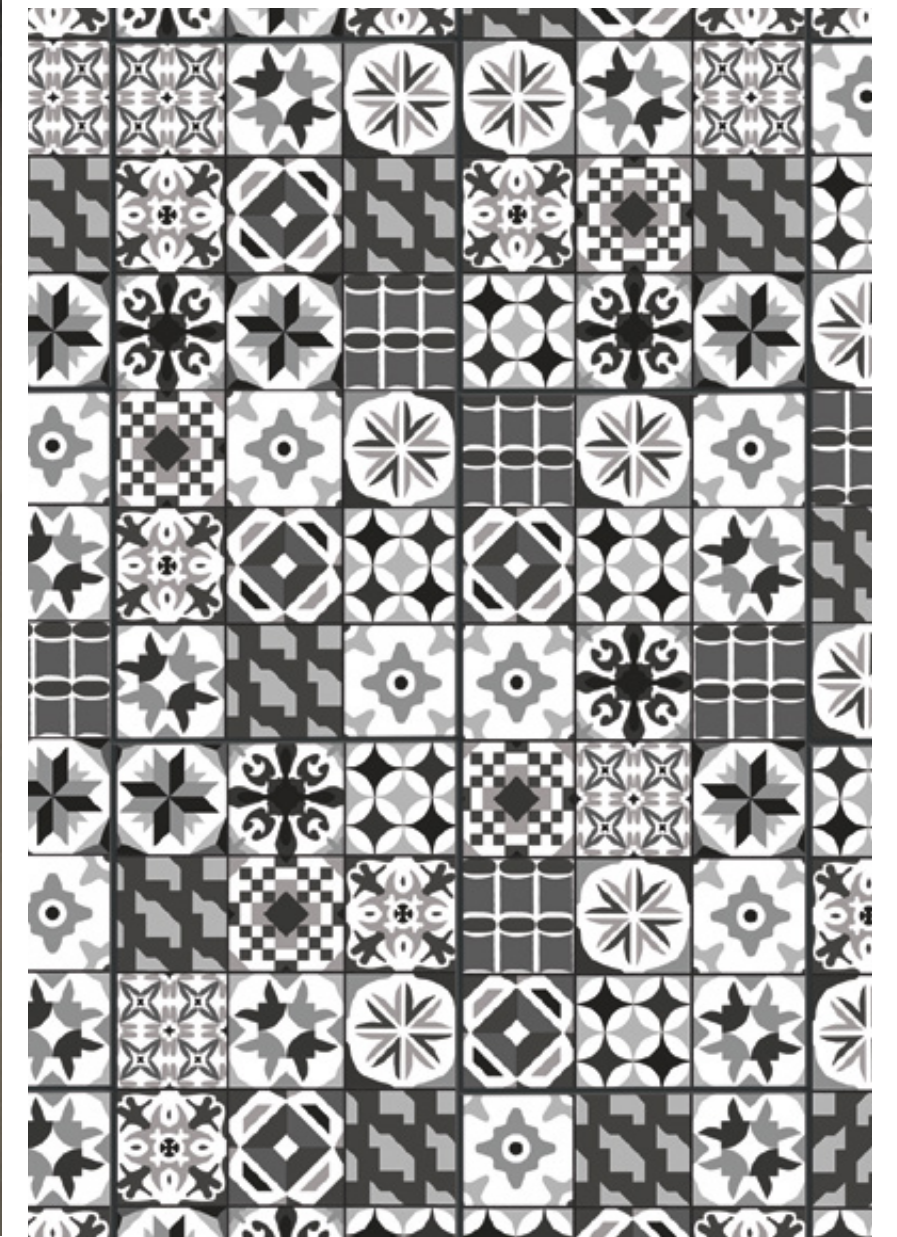


NCS-06 **CLASSIC STONE**

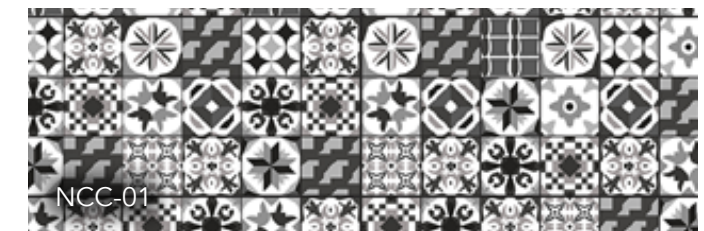




NCC-01 Casablanca Ceramic

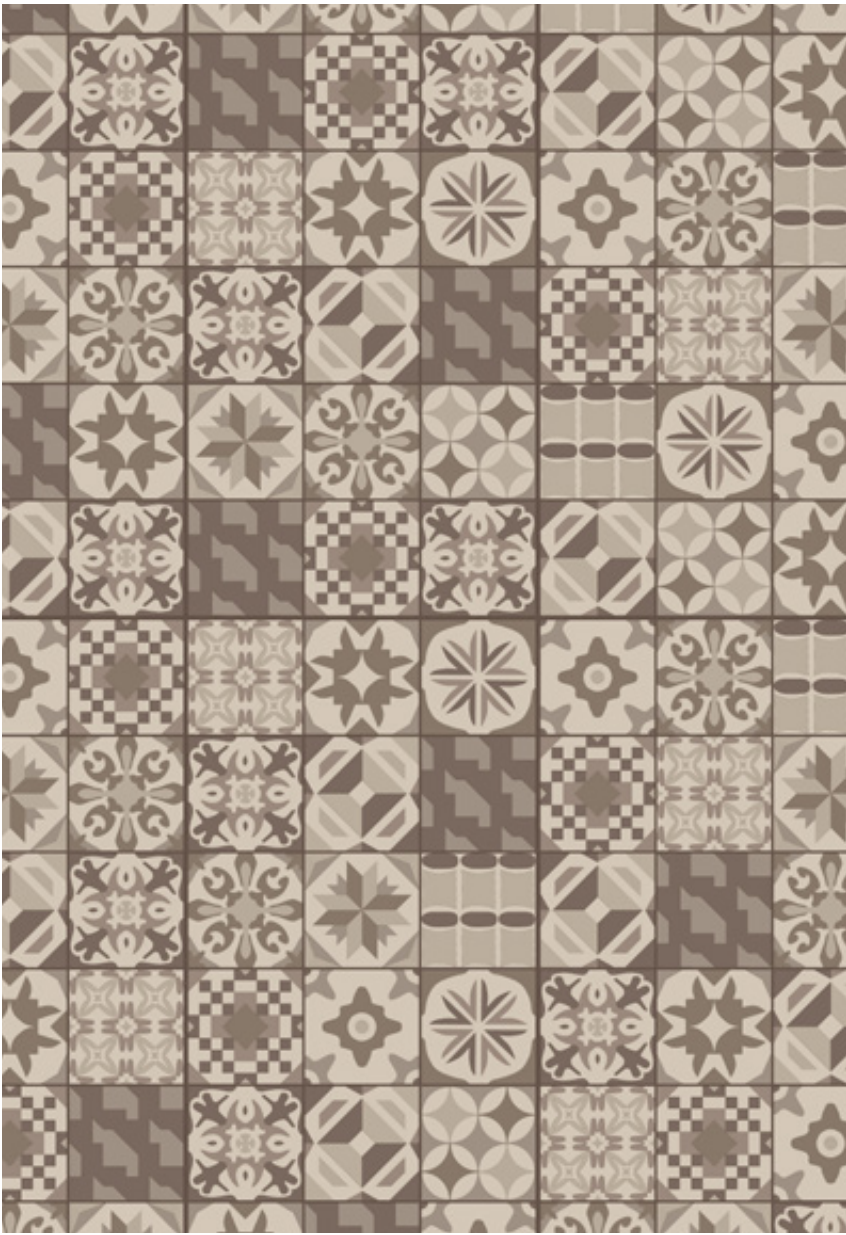


NCC-01 **CASABLANCA CERAMIC**





NCC-04 Casablanca Ceramic



NCC-04 **CASABLANCA CERAMIC**





NCC-06 Casablanca Ceramic



NCC-06 **CASABLANCA CERAMIC**

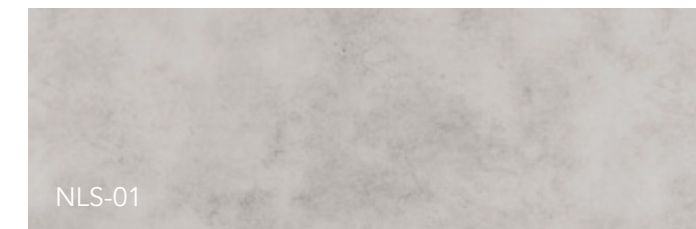




NLS-01 Luxor Stone

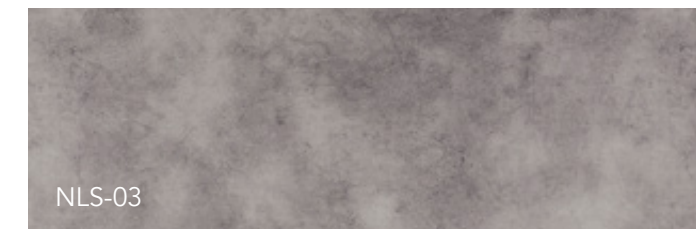


NLS-01 **LUXOR STONE**





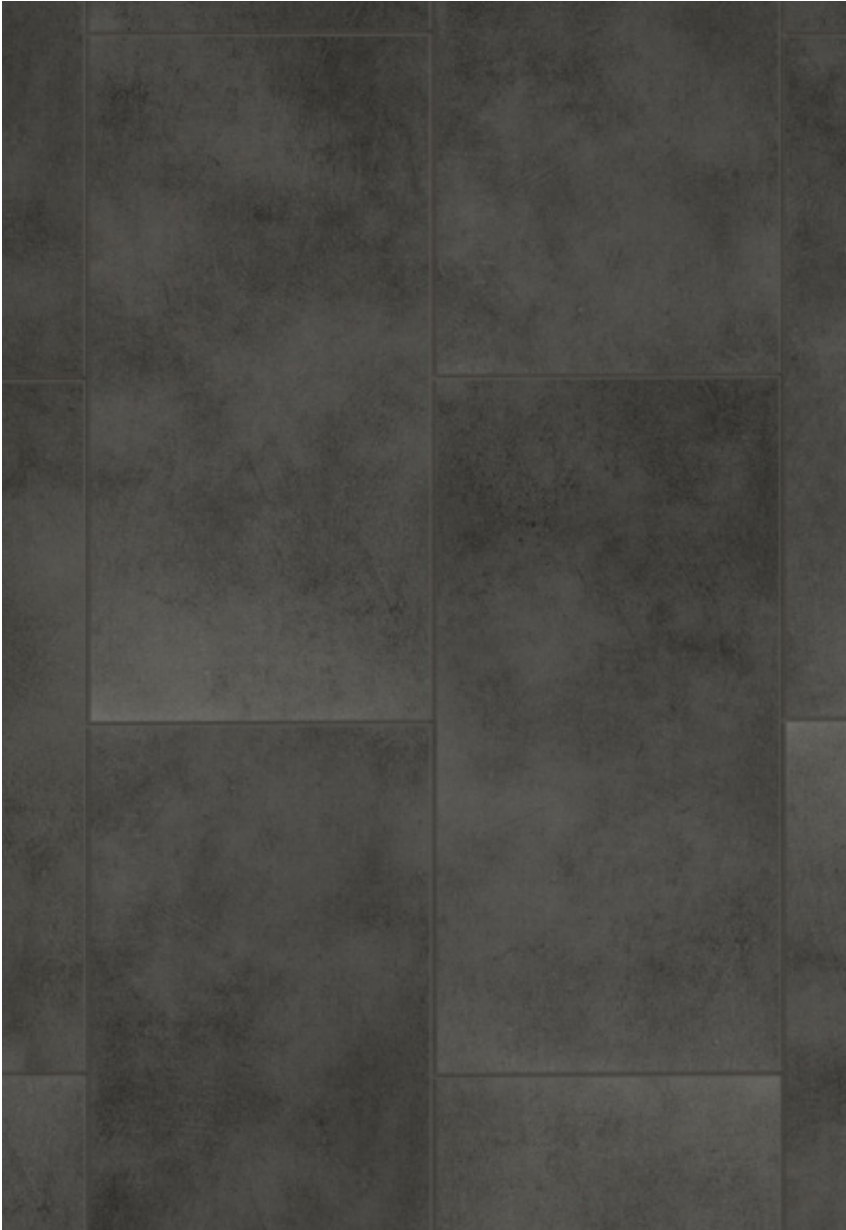
NLS-03 **LUXOR STONE**



NLS-03 Luxor Stone



NLS-09 Luxor Stone



NLS-09 **LUXOR STONE**





NMR-04 Mountain Rock



NMR-04 **MOUNTAIN ROCK**





NWC-01 Washed Concrete



NWC-01 **WASHED CONCRETE**



NWC-01



NWC-05 Washed Concrete

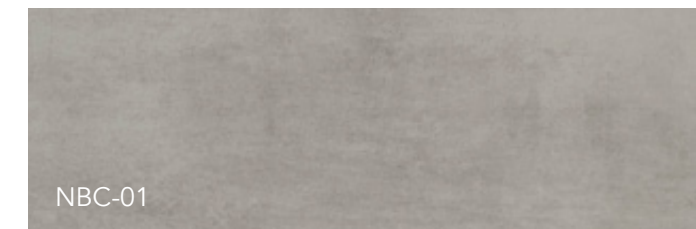


NWC-05 **WASHED CONCRETE**

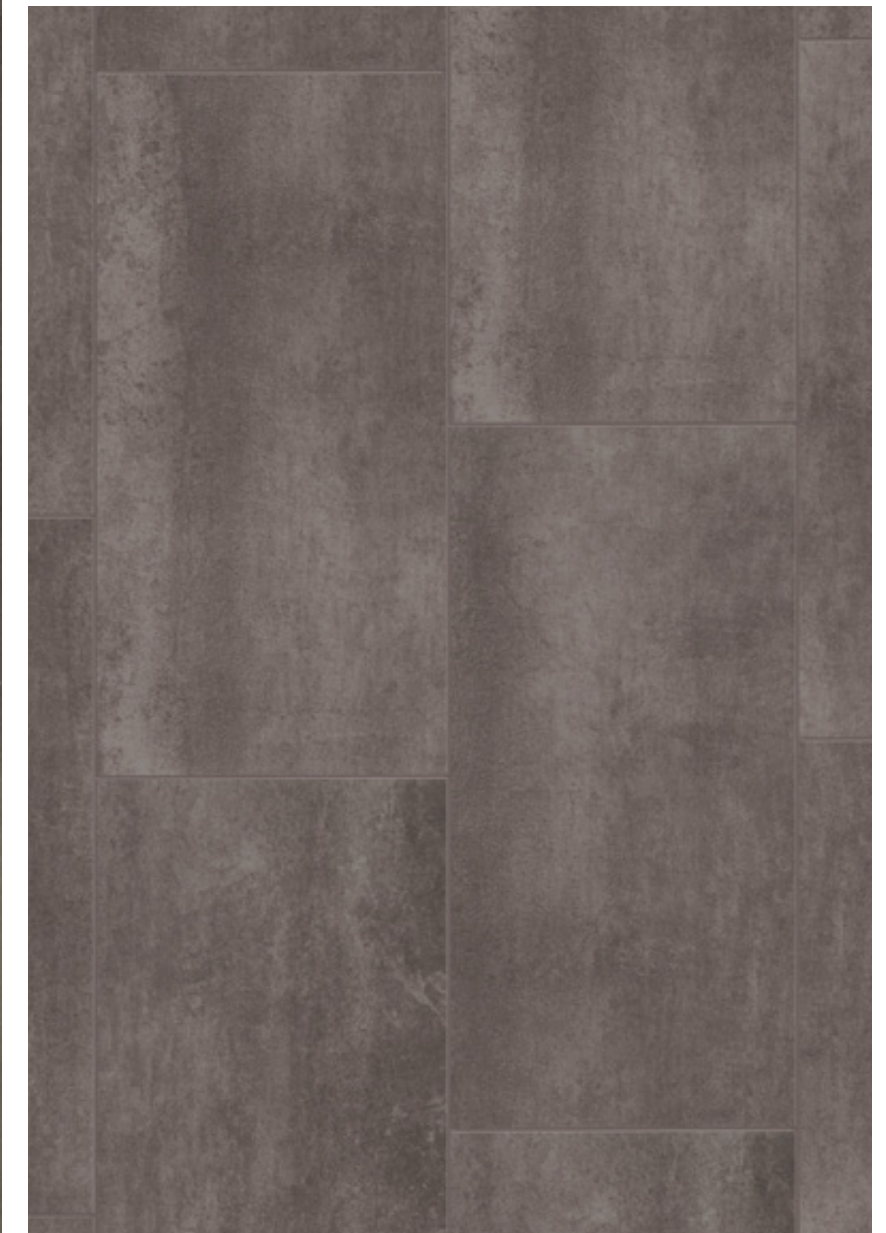




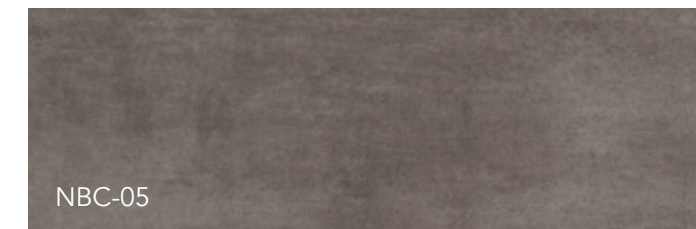
NBC-01 **BRUSHED CONCRETE**



NBC-01 Brushed Concrete



NBC-05 **BRUSHED CONCRETE**



NBC-05 Brushed Concrete



NRC-01 Raw Concrete



NRC-01 **RAW CONCRETE**



NRC-01



NRC-05 **RAW CONCRETE**

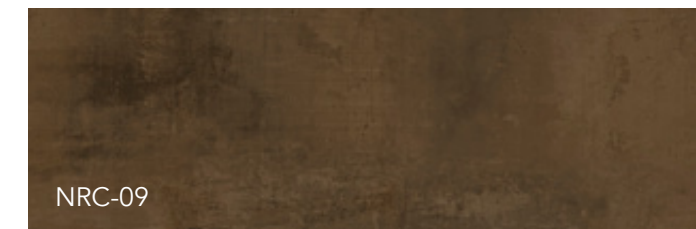




NRC-09 Raw Concrete



NRC-09 **RAW CONCRETE**

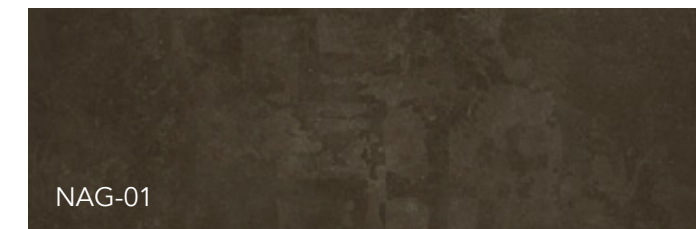




NAG-01 Aged Grey



NAG-01 **AGED GREY**



MOQ - SALES CONDITIONS

1 format x 20' container
= 20 pallet /format

In each 20' container could only be chosen one size: **Tile** / **Tile XL** / **Plank**



20' container



20 pallet

WOULD LIKE TO MIX COLORS IN THE SAME 20' CONTAINER?

4 colors /20' container (in same format)

This means **5 pallets** per **color** from **our running collection**, not On Demand colors.





FAQS

FAQS

Which tools I need for the installation?

It does not require the use of professional tools. You only need a cutter, pencil, metallic setsquare, level and gun for silicone application.

Is necessary a professional to install the product?

It is no necessary a professional to install VTC Wall Solution following the steps on the Installation Guide. Take your time for doing the work and you will get a high quality finish.

Can it be installed by myself?

The VTC Wall Solution is easy to install, you just need some basic tools. We recommend to read the Installation Guide or see the installation video guide to understand how to install the product.

Could be installed out doors?

No, is an indoor product.

Can it be installed in any place of the house?

Yes, wherever indoors. Able to be installed in the bathroom*, kitchen**, rooms, corridors, attics, garages or other areas.

**The installation in bathrooms where the water can be in contact with the tiles (shower area) is necessary to apply a small line of transparent silicon anti-water before apply each additional tile. With this we get that the tiles stay sealed, avoiding the penetration of the water and create mold in the future.*

***To install in kitchens, should have induction or vitroceramic (never gas kitchen) and to protect the tiles of the wall with a refined glass or stainless steel board in order to avoid the direct contact. The decorative tiles of the wall could be melted with a prolonged contact.*

Can it be installed in the shower?

Yes, is 100% water resistant and it is guaranteed for damp areas as the shower. It is always recommended that the installation stay totally fixed in order to avoid future water filtrations throw the behind of the wall. For this reason is recommended apply transparent silicon in all the perimeters of the tile during the installation process of each tile. You can see the process in our installation video guide.

Why I have to install the silicone in the shower?

We recommend that before install each tile, apply a line of transparent silicone anti-water and anti-mold around the perimeter of the tile/plank to avoid that water can penetrate from behind and generate mold in the future with the prejudice for it health that it can represent.

Can it be installed on any surface?

Yes, but has to apply a previous primer in porous materials as coated, wood, casts... For the perfect adherence, it is mandatory to apply the PU Glue.

Can be installed directly on ceramic tiles?

Yes, one of the advantages of VTC Wall Solution is its adaptation to any surface. Its fixing system allows fixing it at the moment to almost all the surfaces. The installation on ceramic tiles it is only necessary to keep the wall clean without grease or paint before stick it.

Can be installed on plaster, cement, wood, stippled paint or coated?

For installing the vinyl wall tiles on plaster or coated wall is necessary to follow the advises:

- Before installing we have to be sure that the walls are free of damp, greases or recesses which can affect the perfect adherence of the tiles.
- It is not recommended its installation on unevenness superiors to 3 mm per lineal meter.
- It is mandatory apply the Primer on the walls when it is installed on coated, plaster, cement, wood or laminated or any porous surface in order for the guarantee to apply.
- If you want to install it on coated with high porous, sand the drops of the coated to get a regular level on the wall no superior to 3 mm.

Once installed, can I remove and replace?

Yes, after install the tile you can remove and replace for a new one. However, due to the glue is high-grip and quick drying, it is very likely that the tile breaks while you are removing. For the change, is recommended the introduction of a spatula or a sharp tool in the joint between bevels and separate the tiles slowly from the wall.

Are the mineral tiles affected by the temperatures?

The mineral tiles can hold temperatures between 5 and 45 degrees without any alteration caused by the hot or the cold. Passed this temperatures, the cooling and shrinkage phase of the product is minimum.

Is it fireproof?

The mineral vinyl wall tiles have a classification C-s2,d0. This result certify that in case of fire, the tiles will have a fire behavior inside the current regulations of construction. This means that the tiles are certified that they are already complying with the European Rule EN13823:2012. If you want to install our tiles in an office, shop or commerce or public local, consult with your architect or engineer about the required classification in each case.

If it is 100% waterproof, can it be installed on damp walls?

No, in order to get the adequate adherence of the tiles, the wall has to be clean and free of damp to avoid the detachment of the tile.

Is able to place tiles near heating sources?

When the tiles will be installed near heating sources that can affect directly the tiles like stoves, it is advisable avoid the direct exposition throw refractory glasses or separator aluminum plates.

Have the tiles thermal and sound insulation?

Without any doubt once the product will be installed you will note a thermic insulation. Compared with a ceramic tile, the VTC Wall Solution tiles offers a hot and warm pleasant handle, keeping better the temperatures getting an air conditioning in saving and heating. Other advantage is the improvement in sound insulation, it reduces 10db and optimizes the acoustic bars of the wall where will be installed.

Can be installed for people with allergic problems?

It is ideally due to avoid the adherence of dust mites being a hipoallergic product. It is installed in hospitals and kindergartens.

How can I clean it?

The tiles are easy to clean. It is recommendable the use of neutral soap or soap solution without abrasive products as ammonia, bleach, etc.

Has to be protected from the sunlight?

Is better that if the installation is exposed to the sun through the window, it can produce the magnifying glass effect and generate high temperatures which can detach the product, so it will be necessary some protection to avoid the negative effects in the product.

Is it possible to combine formats?

You can combine colors and formats to create personalized designs, getting unique designs combining woods and ceramics.

Is possible to cover the bevel with some type of paste to make it white?

We recommend to make a test before in order to avoid any alteration on the product.

What is the function of the bevel?

The bevel create the most realistic similitude to natural ceramic and conceal the possible mistakes in the installation as well as the irregularities in the old wall.

What happen if after some time I want to remove the tiles?

For the change, is recommended the introduction of a spatula in the joint between bevels and separate the tiles slowly from the wall. It is normal that some part of the glue of the self-adhesive and the extra PU Glue applied in the holes, remain in the wall. This can be removed scratching with a spatula.

RECOMENDATIONS

Installation in public areas 100% guaranteed

The product has two certificated test by Applus+ Laboratories.

The tiles are soak for 7 days under the water and once are removed from the water, they have augmented only the 0.9 % of its size. This makes the product 100% water resistant due to it never will be soaked.

During 15 minutes, a 35-degrees flame is in direct contact with the tile. Once removed the flame, the tile only has been darker the affected part for the flame but the fire is not extended and there is no production of materials. It does not generate toxic smoke so its installation in public areas is certificated.

Recommended installation in the shower

Apply a line of transparent anti-mold silicone around the perimeter during the installation of each tile in order to get the tiles together and avoid that water could generate damp behind the tiles.

Recommended installation in kitchens

We recommend the colocation of a splashback board during the cooking or in direct or near contact to a heating sources.



TECHNICAL DATA

TECHNICAL DATA

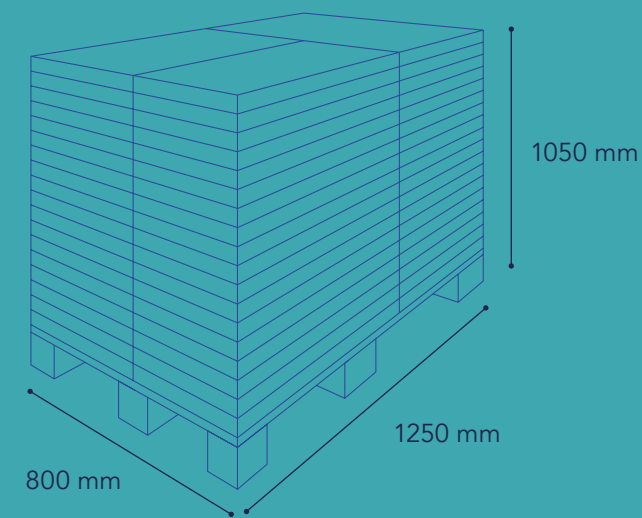
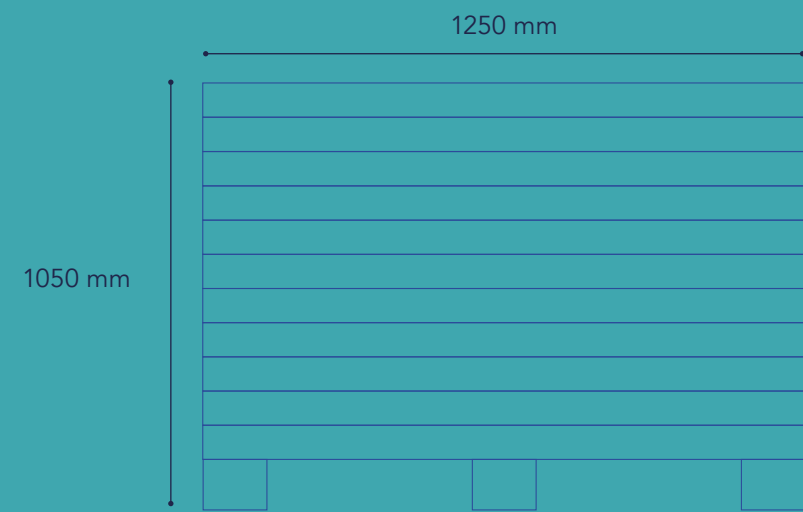
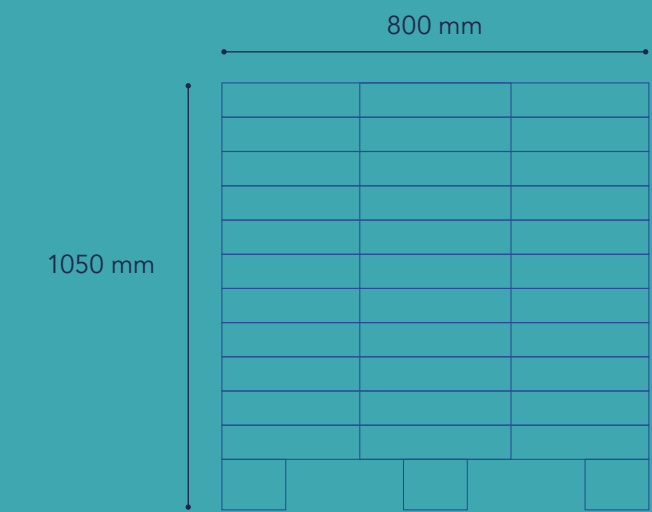
Sizes		Differents options available*
Total thickness		4 mm / 5,5 mm / 6,5 mm
Foamed backing		1,5 mm
Mineral fiber board		3 mm
PVC protective coating		1 mm
Bevel		V-bevel 4 sides painted
Colour fastness to light	EN ISO105 B02:2014	6
Dimensional stability	ISO23999:2012	0,10 %
Expansion in temperature change from 23 °C - 45 °C		0,010 %
Shrinkage in temperature change from 23 °C - 5 °C		-0,047 %
Curling after heat exposure	ISO23999:2012	0 mm
Fire behavior	UNE-EN 13823:2012	B-s1,d0
Formaldehyde emissions	EN717-1:2004	PASS
Swelling in thickness after immersion in water	EN317:1994	0,9 %
Determination of residual indentation	EN ISO24343-1:2012	0,04 mm
VOC emissions testing	ISO:16000 / 3,6,9,11	A+
VOC emissions testing CDPH1350	(California Specification 01350)	PASS
US California Proposition 65 - Phthalate		PASS

*Check Available Sizes section

LOGISTICAL DATA TILE XL (400 x 800 mm)

Size	400 x 800 mm
Kg/sqm	6,8 kg
Tiles/box	6
Kg/box	13,1 kg
Kg/pallet	1061,1 kg
Sqm/box	1,92 sqm
Box/pallet	81
Sqm/pallet	155,52 sqm
Sqm/20 ft container	3110,40 sqm
Pallets/20 ft container	20

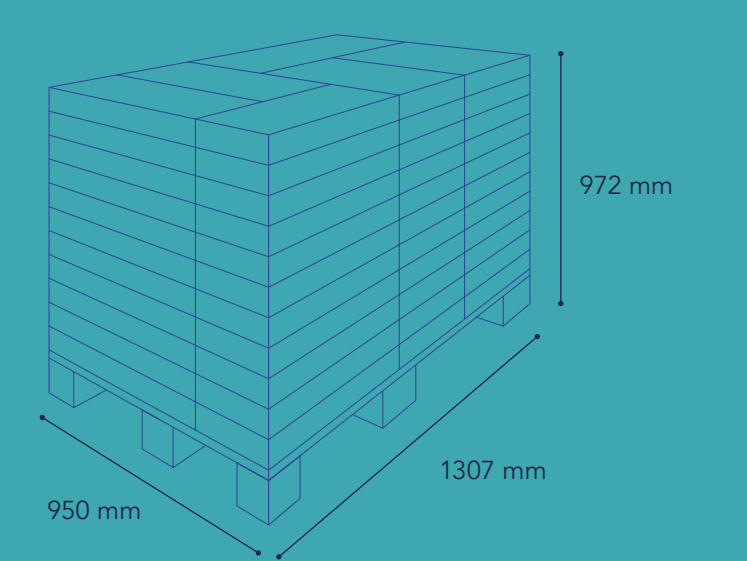
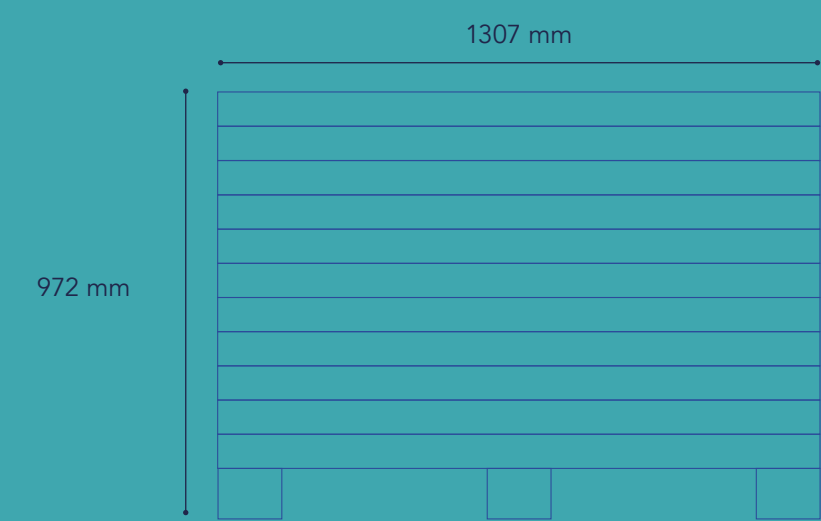
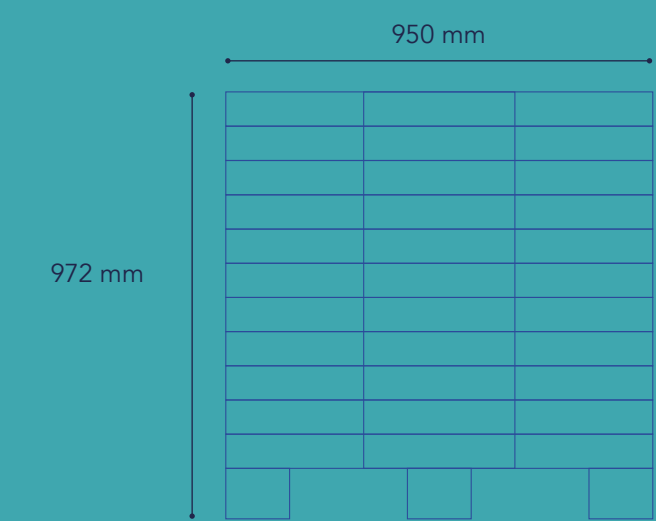
*Net weight aprox. without box and pallets



LOGISTICAL DATA TILE (305 x 610 mm)

Size	305 x 610 mm
Kg/sqm	5,6 kg
Tiles/box	10
Kg/box	10,42 kg
Kg/pallet	937,8 kg
Sqm/box	1,86 sqm
Box/pallet	90
Sqm/pallet	167,44 sqm
Sqm/20 ft container	3348,90 sqm
Pallets/20 ft container	20

*Net weight aprox. without box and pallets



LOGISTICAL DATA PLANK (185 x 915 mm)

Size	185 x 915 mm
Kg/sqm	5,6 kg
Tiles/box	10
Kg/box	9,48 kg
Kg/pallet	853,2 kg
Sqm/box	1,69 sqm
Box/pallet	90
Sqm/pallet	152,35 sqm
Sqm/20 ft container	3046,95 sqm
Pallets/20 ft container	20

*Net weight aprox. without box and pallets

